

# BRAUN



Watches  
Clocks  
Calculators

---





**"Less but better"**

Dieter Rams

# Ten principles of good design

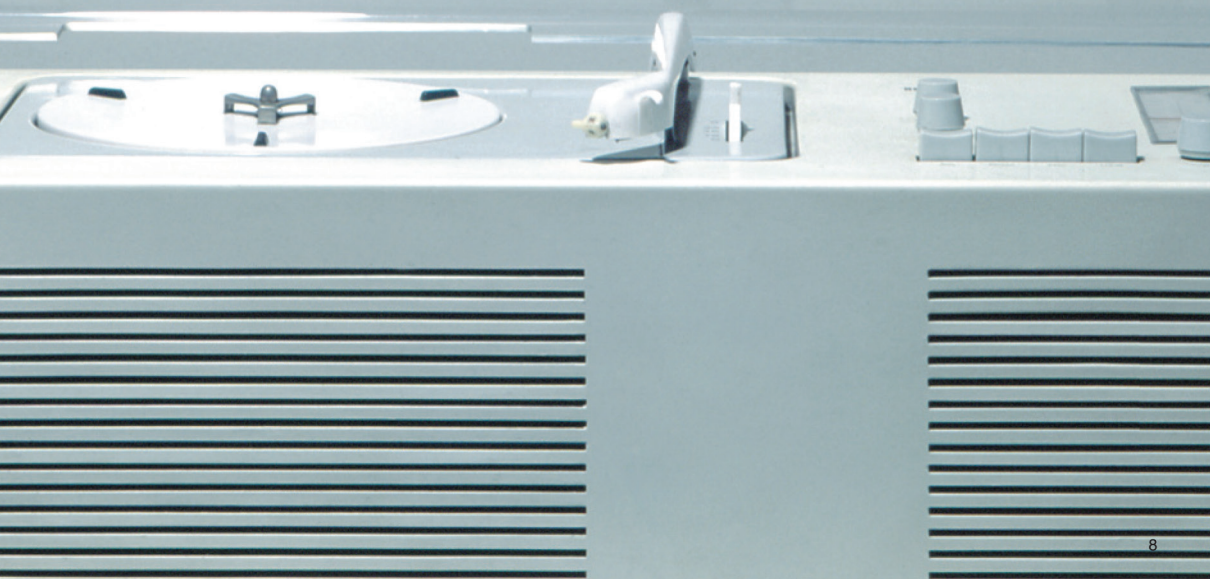
## Braun design

As head of design at Braun, **Dieter Rams** emerged as one of the most influential industrial designers of the late 20th century by defining an elegant, legible, yet rigorous visual language for its products. He defined ten principles of good design.

### Good design...

1. is innovative
2. makes a product useful
3. is aesthetic
4. makes a product understandable
5. is unobtrusive
6. is honest
7. is long-lasting
8. is thorough down to the last detail
9. is environmentally friendly
10. is as little design as possible







In 1921, engineer Max Braun established his company in Frankfurt am Main, first making radio parts and by 1929 complete power amplifiers and radio sets. Max Braun was one of the first manufacturers in Europe to combine radios and record players in a single unit.

**1921**

During World War II, Braun was compelled to more or less abandon products for the civilian sector, and in 1944, the Frankfurt factories were nearly entirely destroyed. With 150 employees, Max Braun began rebuilding his company in 1945.

**1944**

Max Braun died suddenly in November 1951. His sons Artur (26) and Erwin (30) had to take over company management from one day to the next. As early as 1951, Braun brothers introduced an employee magazine, soon followed by the groundbreaking Braun Health Center and a modern cafeteria offering high-quality, nutritious meals – traditions continued up until today.

**1951**

**1934**

The Braun logo with the distinctive raised and rounded "A" in the middle was born in 1934.

**BRAUN**

**1950**

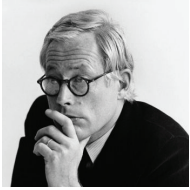
1950 saw the launch of the first electric shaver, the "S 50", combining an oscillating cutter block with an ultra-thin yet stable steel foil clamped above it. This principle – in further refined and perfected form – is employed in Braun shavers up to the present day.



**1954**

The starting point for the new design concept was a positive assessment of the potential shopper: intelligent and open-minded, someone who appreciated unobtrusive products which left him or her ample freedom for personal fulfilment.

After a landmark speech by designer Wilhelm Wagenfeld on industrial design and the responsibility of the entrepreneur, Erwin Braun felt so strongly confirmed in his plans that he immediately commissioned Wagenfeld with a design assignment. Seeking further designers, Braun in late 1954 discovered the fledgling "Hochschule fuer Gestaltung" design academy in Ulm, which set out to carry on the work of the Bauhaus movement disbanded by the Nazis in 1933.



The hiring of 23-year-old Dieter Rams, in 1955, had far-reaching implications. Rams started as an interior designer and soon became the nucleus of Braun's own design department. Gradually, the new design style spread not only to the entire product line, but also to all communications instruments – from stationery and use instructions all the way to advertising. This gave Braun a corporate identity long before the term was even coined.

**1955**



**TFG2 (1968)**

The new design concept implemented by Dieter Rams and the Braun design team quickly gained fame; as early as in the late 1950's, Braun products were selected for prestigious permanent collections such as at the MoMa in New York. During this period, Braun's traditional strength in radios, record players and combined hi fi units continued.

**1958**



In the 1990's two important business segments emerged: electrical oral care and female hair removal. A unique partnership between Braun and Oral-B led to the creation of electric toothbrushes designed by the Braun design team – a partnership still successful today within P&G. Braun also acquired Silk-épil epilators and expanded this into a leading international brand for female beauty.

**1997**



**SK4 (1956)**

**1980**

Clocks, watches and calculators were important primarily in the 1980's and set new design standards for clarity and reduction, combined with innovative technology. During the 1980's Braun concluded its presence in the HiFi business with an exclusive 'Limited edition' to then focus on the more lucrative small appliance sector, in particular personal care and household products. Shavers became – and still are today - the biggest business segment for Braun, featuring design innovations such as two-component molding to achieve soft nubs on a hard housing, for better handling.

**2011**

Today Braun focuses on the four key segments: male grooming with Braun Series electric shavers, female grooming with Silk-épil epilators, Satin Hair with hair care appliances and household with Multiquick hand blenders and other useful kitchen helpers. The company's values still share the original vision of the Braun brothers: creating products based on respect for people – employees and customers – and using design as an essential medium to achieve this. As expressed by Braun's Head of Design Oliver Grabes, Braun's design philosophy is based on its rich past tradition, but it continues to evolve to meet consumer needs of the future.



**ABW30 (1982)**



**ET66 (1987)**













- Design awards 2015



## BNC016

The Digital VA LCD Alarm clock received an iF award in 2015 from the jury of international design experts. Its ergonomic design allows for better visibility from all angles and an integrated large snooze button doubles up to provide stability.



## BN0171

This full ceramic analogue watch received an iF award and a German Design Award in 2015 from the juries of international design experts. A concept watch that is even better in reality, it is a stunning physical interpretation of Braun's 'less, but better' product design philosophy.





## • Design awards 2014

### German Design Award



Braun watches and clocks were awarded a total of four German Design Awards at the annual awards ceremony in Frankfurt on 7th February 2014. The German Design Award is an international premium prize, which successfully enhances the standing of both designers and companies. Prizes are awarded to top quality products and projects from product and communication design, design personalities and newcomers, all of whom are —in their own way— pioneering in German and international design landscape. As an industry competition for the industry that highlights participants' great design expertise, the German Design Award has an excellent public image. This is also down to the reputation of its organizer, the German Design Council, which has been representing and supporting the German design industry with its expertise in all questions relating to design for 60 years now. To win a German Design Award on the occasion of the anniversary of the German Design Council is especially significant – it stands for 60 years of design culture.



### BN0095

Following the IF and Red dot awards of 2013, this unique watch was recognised once again – this time receiving four German Design Awards from a jury of leading international design experts in 2014.



## • Design awards 2013

### iF award



product  
design award

2013 GOLD



product  
design award

2013

### Red Dot design award



reddot design award  
winner 2013



reddot design award  
honourable mention 2013

Braun watches and clocks were awarded a total of four prestigious iF awards and six acclaimed gold iF awards at the annual ceremony in Munich on 22nd February 2013. The iF design award was established in 1953 and is one of the most highly sought after awards for design excellence.

Braun watches and clocks were awarded a total of two prestigious Red Dot awards and four acclaimed Red Dot 'honourable mentions' in 2013. The Red Dot design award dates back to 1955 and is now one of the world's largest and most distinguished design competitions. Red Dot stands for belonging to the best in design and business.



product  
design award

2013 GOLD

### BNC009BK, BNC009WH

Following the Red dot awards of 2012 these exceptional Braun Digital alarm clocks were recognised once again - this time receiving two gold iF awards from the jury of leading international design experts in 2013.



product  
design award

2013 GOLD

### BNC010BK, BNC010WH

Following the Red dot awards of 2012 these exceptional Braun Digital FM/AM radio clocks were recognised once again - this time receiving two gold iF awards from the jury of leading international design experts in 2013.



product  
design award

2013 GOLD



reddot design award  
winner 2013

## BNC013BK, BNC013WH

The new Braun Digital weather station clock has been immediately recognised as a design icon by receiving two gold iF awards and two Red Dot design awards from the juries of leading international design experts in 2013. This clock reinvents the traditional weather station. Its beautiful form has been created to be a show-piece in the home, whilst the unique customisable interface is truly a pleasure to use.



product  
design award

2013



reddot design award  
honourable mention 2013

## BN0095

Following the success of the Braun Prestige digital watch in 2012, where it won both the iF award and Red dot award, the new Braun Prestige analogue watch has itself been recognised by receiving four iF awards and four Red Dot 'honourable mention' awards from the juries of leading international design experts in 2013. The case of this Braun analogue watch is carved of one single block of steel. This one-piece' construction eliminates the need for a case-back and in turn removes the element of potential leakage. The Swiss movement is mounted into the case from the top before being covered and sealed by the sapphire crystal. This allowed the Braun designers to taper the bottom part of the watch more elegantly and attach the band lugs in such a way that would not be possible with conventional watch construction.

## • Design awards 2012

### iF award



Braun watches and clocks were awarded a total of six prestigious iF awards and two acclaimed gold iF awards at the annual ceremony in Munich on 9th February 2012. The iF design award was established in 1953 and is one of the most highly sought after awards for design excellence. Braun is world renowned for its characteristic, style-defining form language. It is Braun's comprehensive technical and design quality that makes every product so fascinating. The reflection of this technical excellence in the design of Braun products has become a watchword in international industry in the 20th and 21st centuries.

### Red Dot design award



Braun watches and clocks were awarded a total of ten prestigious Red Dot awards and two acclaimed Red Dot 'honourable mentions'. The Red Dot design award dates back to 1955 and is now one of the world's largest and most distinguished design competitions. Red Dot stands for belonging to the best in design and business. Excellent design is selected by competent expert juries in the areas of product design, communication design, and design concepts. Winning products are presented in the Red Dot Design Museum on the premises of the historical Zollverein Coal Mine Industrial Complex in Essen. In 2012, 1800 companies and designers from 58 countries registered to the "Red Dot award: product design". Within the competition's 19 different categories, a total of 4515 registrations were submitted, but only the best were awarded.



### Braun Digital clock range

The Braun Digital travel, alarm and radio clocks received six Red Dot awards from the jury of leading international design experts in 2012. This range of innovative and cutting edge clocks are designed for the 21st century, reflecting Braun's core philosophy that design mirrors functionality. Here technical excellence and quality combine to form the new aesthetic.





BN0035WHBK



2012 GOLD



reddot design award  
honourable mention 2012

## Braun Classic chronograph

The outstanding design concept of the Braun Classic chronograph watch received two Gold iF product design awards and two Red Dot honourable mentions from the juries of leading international design experts in 2012. This watch exemplifies clean, modern design, making it timeless classic.



BN0106SLBTG



2012



reddot design award  
winner 2012

## Braun Prestige digital

The Braun Prestige digital watch received four iF and four Red Dot product design awards from the jury of leading international design experts in 2012. The state of the art technology is reflected in its cutting edge design, encapsulating Braun's core values of functionality, quality and aesthetics.



BN0115WHBK



product  
design award

2012

## Braun Sports chronograph

The Braun Sports chronograph watch received two iF product design awards from the jury of leading international design experts in 2012. The one-piece integrated flow of the high grade silicon strap together with the stainless steel bezel creates a functional aesthetic that resonates with modern times.



Watches  
Clocks  
Calculators

---

• Gents

# BN0021

## Classic watch

- Quartz 3 hand movement
- 50m water resistant
- Matt stainless steel case
- Snap case back
- Scratch resistant mineral glass
- New leather strap
- Ø38mm x D9mm



BN0021BK BKG



BN0021WH BRG





• Gents

# BN0024

## Classic watch

- Quartz 3 hand movement
- 50m water resistant
- Matt stainless steel case
- Snap case back
- Scratch resistant mineral glass
- New leather strap
- Ø38mm x D8.5mm



BN0024WHBKG



BN0024BKBRG

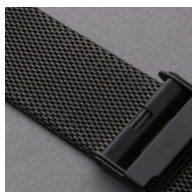


• Gents

# BN0032

## Classic watch

- Quartz 3 hand movement
- Date display
- 50m water resistant
- Matt stainless steel case
- Snap case back
- Scratch resistant mineral glass
- New leather strap
- Mesh strap
- Ø40mm x D8mm



BN0032WHBKG



BN0032BKBKG



BN0032WHSLMHG



BN0032BKBKMHG



• Gents

# BN0035

Classic watch

- Quartz chronograph movement
- Date display
- 50m water resistant
- Stainless steel case
- Snap case back
- Scratch resistant mineral glass
- New leather strap
- Ø40mm x D9.5mm
- iF and Red Dot awards 2012



product  
design award



reddot design award  
honourable mention 2012

2012 GOLD



BN0035WHBKG



BN0035BKBKG



BN0035SLBRG



BN0035BKBRG





• Gents

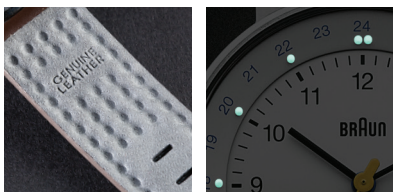
# BN0142

Classic watch

- Ronda quartz GMT movement
- Date display
- 50m water resistant
- Matt stainless steel case
- Snap case back
- Scratch resistant mineral glass
- Luminous hour markers
- New leather strap
- Ø40mm x D8mm



BN0142WHBLG



BN0142BKBRG



BN0142BKBKG



• Gents

# BN0159

## Classic watch

- Quartz 3 hand movement
- Digital display
- 12/24 hour time display
- Dual time
- Day, date, year function
- Alarm
- Chronograph
- EL backlight
- 50m water resistant
- Matt stainless steel case
- Snap case back
- Scratch resistant mineral glass
- Rubber strap
- W44mm x H52mm x D11mm



BN0159WHBKG



BN0159BKBKG



44



52

11



BN0159SLBKBKG



BN0159GYGYG



• Gents

# BN0211

## Classic slim watch

---

- Quartz 3 hand movement
- 30m water resistant
- Matt stainless steel case
- Bespoke screw on case back
- Scratch resistant mineral glass
- Fine mesh strap
- Ø38mm x D6.5mm



BN0211BKSLMHG



• Ladies

# BN0011

## Classic watch

---

- Quartz 3 hand movement
- 50m water resistant
- Matt stainless steel case
- Snap case back
- Scratch resistant mineral glass
- Leather strap
- Ø33mm x D8mm



BN0011BKBL



• Ladies

# BN0021

## Classic watch

- Quartz 3 hand movement
- 50m water resistant
- Matt stainless steel case
- Snap case back
- Scratch resistant mineral glass
- Leather strap
- Ø31mm x D8mm



BN0021WHWHL



BN0021BKBKL

• Ladies

# BN0031

## Classic watch

- Quartz 3 hand movement
- 50m water resistant
- Matt stainless steel case
- Snap case back
- Scratch resistant mineral glass
- Mesh strap
- Ø33mm x D8mm



BN0031WHSLMHL





• Ladies

# BN0031

## Classic watch

- Quartz 3 hand movement
- 50m water resistant
- Matt stainless steel case
- Snap case back
- Scratch resistant mineral glass
- Leather strap
- Ø33mm x D8mm



BN0031SLBGL



BN0031WHLPKL



BN0031WHTQL

• Ladies

# BN0211

## Classic slim watch

---

- Quartz 3 hand movement
- 30m water resistant
- Matt stainless steel case
- Bespoke screw on case back
- Scratch resistant mineral glass
- Fine mesh strap
- Ø32mm x D6.5mm



BN0211WHSLMHL





• Unisex

# BN0171

## Classic watch

- Quartz 3 hand movement
- 30m water resistant
- Ceramic case
- Ceramic bracelet
- Scratch resistant mineral glass
- Ø38mm x D9.5mm



BN0171GYGYG



BN0171BKBKG

• Gents

# BN0046

## Digital watch

---

- Digital display
- 12/24 hour time display
- PM indicator
- Date
- 50m water resistant
- Matt black plated stainless steel case
- Screw on case back
- Scratch resistant mineral glass
- Leather strap
- W36mm x H36mm x D7.3mm



BN0046BKBKG



• Gents

# BN0076

## Digital watch

- Digital display
- Electro luminescent display
- Time/Date
- 30m water resistant
- Matt stainless steel case
- Screw on case back
- Scratch resistant mineral glass
- Leather strap
- W30mm x H41mm x D10mm



BN0076SLBKG



• Gents

# BN0111

## Sports watch

- Quartz 3 hand movement
- 50m water resistant
- Scratch resistant mineral glass
- Matt plastic case
- Screw on case back
- Silicone strap
- Ø46mm x D12.5mm



BN0111WHBLG



BN0111WHGYG



BN0111BKORG



BN0111BKLGYG



BN0111BKBGK

• Gents

# BN0115

## Sports watch

- Quartz chronograph movement
- 50m water resistant
- Scratch resistant mineral glass
- Matt plastic case
- Screw on case back
- Silicone strap
- Ø46mm x D12.5mm
- iF award 2012



product  
design award

2012



BN0115WHBKBKG





• Ladies

# BN0111

## Sports watch

- Quartz 3 hand movement
- 50m water resistant
- Scratch resistant mineral glass
- Matt plastic case
- Screw on case back
- Silicone strap
- Ø35.5mm x D9mm



BN0111WHPKL



BN0111WHGRL

• Gents

# BN0095

Prestige watch

- Ronda quartz chronograph movement
- Date display
- 50m water resistant
- One-piece, top loading case construction
- Matt stainless steel case
- Sapphire glass
- Black rubber strap
- Stainless steel bracelet
- Ø43mm x D11mm
- iF award 2013
- German Design Award 2014



reddot design award  
honourable mention 2013



BN0095BKSBLTG



BN0095BKSBLKG



BN0095BKBKBTG



BN0095BKBKBKG

• Gents

# BN0106

Prestige watch (German made)

- Ven\_10.1 digital module
- LC display backlit by LED
- EasySkröll® V2.0 operating system
- Energy saving motion detector
- Updatable software
- Chronograph & Countdown
- 100 year perpetual calendar with day (5 languages)
- 30m water resistant
- Stainless steel case
- K1 hardened crystal
- Scratch resistant mineral glass
- Black rubber strap
- Stainless steel bracelet
- W36.7mm x H42mm x D10mm
- iF and Red Dot awards 2012



BN0106SLBTG



BN0106SLBKG



product  
design award



reddot design award  
winner 2012

2012



BN0106BKBTG



BN0106BKBKG

• Gents

# BN0221

## Prestige slim watch

- Ronda swiss made movement
- Quartz 3 hand movement
- 50m water resistant
- Matt stainless steel case
- Bespoke screw on case back
- Sapphire glass
- Black super soft rubber strap
- Ø40mm x D7mm



BN0221BKSLBKG



BN0221BKKBKG







Watches  
Clocks  
Calculators

---



• Analogue clock

# BNC001

## Classic clock

- Alarm clock
- Crescendo alarm
- Quiet German precision quartz movement
- Easy to read dial layout
- Matt case and dial
- W69mm H69mm x D37mm
- Battery included



BNC001WHWH



BNC001GYGY



BNC001BKBK

- Analogue clock

# BNC002

## Classic clock

- Alarm clock
- Crescendo alarm
- Quiet German precision quartz movement
- Easy to read dial layout
- Matt case and dial
- W57mm x H57mm x D27mm
- Battery included



BNC002WHWH



BNC002GYGY



BNC002BKBK

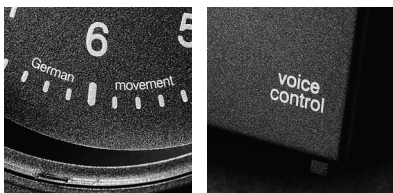


• Analogue clock

# BNC004

## Classic clock

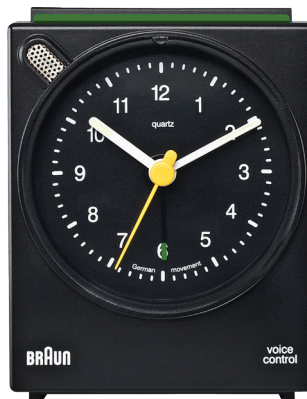
- Alarm clock
- Crescendo alarm
- Voice activated snooze function
- Quiet German precision quartz movement
- Easy to read dial layout
- Matt case and dial
- W65mm x H81mm x D37.5mm
- Battery included



BNC004WHWH



BNC004GYGY



BNC004BKBK





● Analogue clock

# BNC005

## Classic clock

- Alarm clock
- Crescendo alarm
- Motion activated snooze
- World time zone map
- Torch light
- Quiet German precision quartz movement
- Easy to read dial layout
- Matt case and dial
- W72mm x H78mm x D30mm
- Battery included



BNC005WHWH



BNC005GYGY



BNC005BKBK

• Analogue clock

# BNC007-DCF

## Classic clock

- Alarm clock
- Radio controlled movement
- BNC007-MSF version available
- Crescendo alarm
- Snooze function
- Light with delay
- Precision quartz movement
- Easy to read dial layout
- Matt case and dial
- W80mm x H80mm x D57.5mm
- Battery included



BNC007WHWH-DCF



BNC007GYGY-DCF



BNC007BKBK-DCF



• Analogue clock

# BNC007 (Non RC)

## Classic clock

- Alarm clock
- Crescendo alarm
- Snooze function
- Light with delay
- Quiet German precision quartz movement
- Easy to read dial layout
- Matt case and dial
- W80mm x H80mm x D57.5mm
- Battery included



BNC007WHWH



BNC007GYGY



BNC007BKBK

• Analogue clock

# BNC011

## Classic clock

- Alarm clock
- Crescendo alarm
- Quiet German precision quartz movement
- Unique pivot alarm system
- Easy to read dial layout
- Matt case and dial
- W73mm x H77mm x D51mm
- Battery included



BNC011WHWH



BNC011GYGY



BNC011BKBK





• Analogue clock

# BNC012

## Classic clock

- Alarm clock
- Crescendo alarm
- Quiet German precision quartz movement
- Easy to read dial layout
- Matt case and dial
- W75mm x H75mm x D35mm
- Battery included



BNC012WHWH



BNC012GYGY



BNC012BKBK



- Digital clock

# BNC008-RC

## Digital clock

- Travel alarm clock
- Reverse LCD display\*
- Global radio controlled movement
- Non-RC version available
- Snooze function
- Backlight
- 12/24 hour display
- Easy to read display
- Quick set function
- Matt case
- W57.5mm x H57.5mm x D20mm
- Battery included
- Red Dot award applies to white and black versions



reddot design award  
winner 2012



BNC008WH-RC



BNC008BK-RC



BNC008GY-RC

\* Positive LCD display only



- Digital clock

# BNC009-RC

## Digital clock

- Alarm clock
- Reverse LCD display\*
- Global radio controlled movement
- Non-RC version available
- Snooze function
- Backlight
- 12/24 hour display
- Easy to read display
- Quick set function
- Matt case
- W75.5mm x H75.5mm x D45mm
- Battery included
- Red Dot and iF awards apply to white and black versions



reddot design award  
winner 2012



product  
design award

2013 GOLD



BNC009WH-RC



BNC009BK-RC



BNC009GY-RC

\* Positive LCD display only



• Digital clock

# BNC010-SRC

## Digital clock

- Radio alarm clock
- Reverse LCD display\*
- Global radio controlled movement
- Snooze function
- Backlight
- FM/AM radio with 6 preset function
- Volume control
- Digital tuner
- 12/24 hour display
- Easy to read display
- Quick set function
- Matt case
- W180mm x H90mm x D45mm
- DC adaptor option
- Battery included
- Red Dot and iF awards (white and black versions)

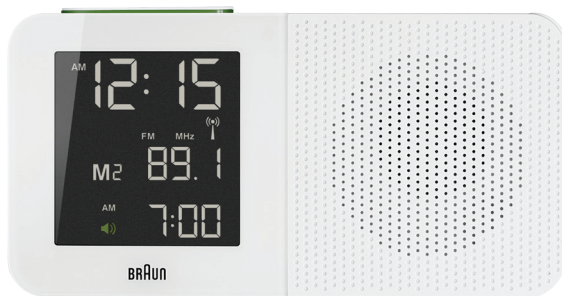


reddot design award  
winner 2012



product  
design award

2013 GOLD



BNC010WH-SRC



BNC010BK-SRC



BNC010GY-SRC  
\* Positive LCD display only



• Digital clock

# BNC013-RC

## Digital clock



reddot design award  
winner 2013



product  
design award

2013 GOLD

- Weather station clock
- Reverse LCD display
- Global radio controlled movement
- Time, alarm time, indoor and outdoor temperature/humidity
- Weather forecast for next 12-24 hours
- Mode functions for individual setting
- Snooze function
- Backlight
- 12/24 hour display
- Easy to read display
- Quick set function
- Outdoor sensor included
- **Main unit:** 88mm x 130mm x 47mm
- **Sensor:** 62mm x 62mm x 26mm
- DC adaptor option
- Batteries included
- Red Dot and iF awards



BNC013WH-RC



BNC013BK-RC





● Digital clock

# BNC015-RC

## Digital clock

- Projection clock
- Reverse LCD display
- Global radio controlled movement
- Motion activated projection of time
- 3 levels of projection brightness
- Snooze function
- Backlight
- 12/24 hour display
- Quick set function
- W130mm x H90mm x D49mm
- DC adaptor included
- Batteries included



BNC015WH-RC



BNC015BK-RC

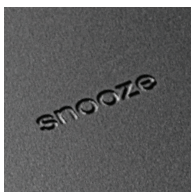


• Digital clock

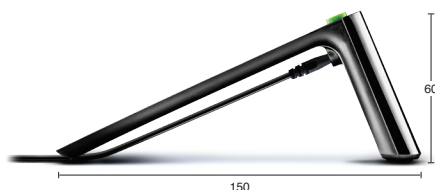
# BNC016

## Digital clock

- LCD alarm clock
- Vertical alignment LCD display\*
- 4 levels of display brightness
- Touch snooze function
- 12/24 hour display
- Quick set function
- W140mm x H60mm x D150mm
- DC adaptor included
- Button cell back up battery included



BNC016BK



\***Vertical alignment (VA) displays** are a form of LCDs in which the liquid crystals naturally align vertically to the glass substrates. When no voltage is applied, the liquid crystals remain perpendicular to the substrate creating a black display between crossed polarizers. When voltage is applied, the liquid crystals shift to a tilted position allowing light to pass through and create a gray-scale display depending on the amount of tilt generated by the electric field. The resulting appearance to the viewer is remarkable.



AM

12:15



25.7

Wed

26°C

75%

• Wall clock

# BNC014-RC

## Digital wall clock

- Wall clock
- Reverse LCD display\*
- Global radio controlled movement
- Non-RC version available
- Time, alarm time, date, day of the week, indoor temperature/humidity
- Folding table stand
- 12/24 hour display
- Easy to read display
- Quick set function
- 211mm x 211mm x 23mm
- Batteries included



BNC014WH-RC



BNC014BK-RC





BNC006BKBK-DCF



• Wall clock

# BNC006-DCF

## Classic wall clock

- Wall clock
- Radio controlled movement
- BNC006-MSF version available
- LCD seconds/date display
- Precision quartz movement
- Easy to read dial layout
- Matt case and dial
- W201mm x H201mm x D32mm
- Battery included



BNC006WHWH-DCF



BNC006GYGY-DCF





BNC006BKBK



• Wall clock

## BNC006 (Non RC)

### Classic wall clock

- Wall clock
- German precision quartz movement
- Easy to read dial layout
- Matt case and dial
- W201mm x H201mm x D32mm
- Battery included



BNC006WHWH



BNC006GYGY

• Wall clock

# BNC017 (DCF)

## Classic large wall clock

- Large wall clock
- Radio controlled movement
- Plastic lens
- Easy to read dial layout
- Matt case and dial
- W ø300mm x D42mm
- Battery included



BNC017BKBK-DCF



BNC017WHWH-DCF



• Wall clock

# BNC017 (Non RC)

## Classic large wall clock

- Wall clock
- Precision quartz movement
- Plastic lens
- Easy to read dial layout
- Matt case and dial
- W ø300mm x D42mm
- Battery included



BNC017BKBK



BNC017WHWH





12'345'678.



.  
○





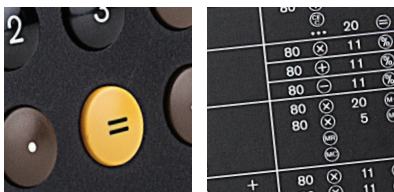


## • Calculator

# BNE001

## Calculator

- Calculator
- 8 digit operating capacity
- Automatic power off
- Protective slide cover
- 77mm x 137mm x 10mm  
82mm x 139mm x 16mm (incl. cover)
- Button cell battery included



BNE001WH



BNE001BK









ZEON Ltd | 39 Waterloo Road | London NW2 7TT  
Tel: 020 8208 1833 | Fax: 020 8208 0350

Braun is a registered trademark of Braun GmbH, Kronberg, Germany used under license by Zeon Ltd

**[www.braun-clocks.com](http://www.braun-clocks.com) | [www.braun-watches.com](http://www.braun-watches.com) | [www.braun-calculators.com](http://www.braun-calculators.com)**